

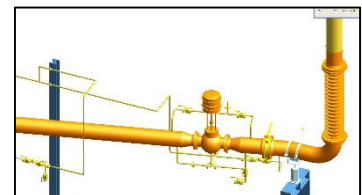
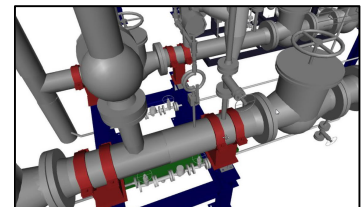
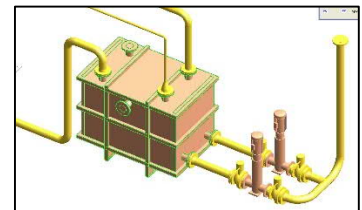
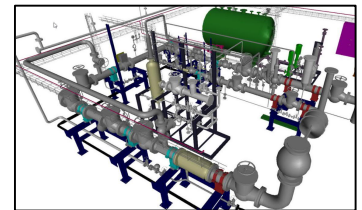
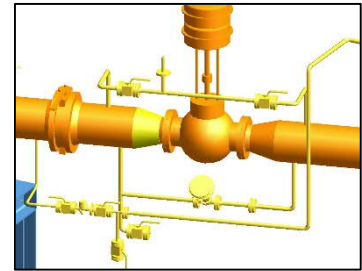
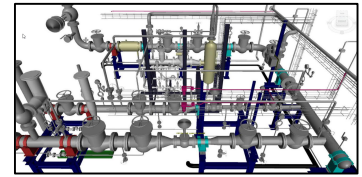
## Piping: Steam and Condensate TC-221

### Design and Operation of Steam & Condensate System

- Saturated Steam
- Superheated Steam
- Condensate – Pressurized.
- Condensate – Pressure Less.

### The Training Course covers

- PED Rules
- EN13480 Design rules
- Steam Tables & SH Steam
- Pipe Layout – Water Droplets removal
- Pipe Layout – Pipe Flexibility
- Pipe Drains with Thermostatic Steam Traps
- Condensate Return from Static Equipment with Floating Ball Steam Traps.
- Seal Off valves – Types and Built-in best practise
- Pressure Reducing Stations with Control Valves
- Pressurized Condensate and Re-evaporation
- Pressure less Condensate, Condensate Boxes for Collection and Pump Transfer
- Emergency Systems and Emergency Stop.
- Compensators
- Protection - Interlocks



*Pictures of Steam Installations from Waste Incineration Plant and Industrial Plant.*

### Contact Information:

Christian Pallesen; +45 2526 8805; [cp@p-engineering.dk](mailto:cp@p-engineering.dk)