

## Piping: Pipe Series Definition TC-220

Training Course focus on Creation of Piping Series and the Practical use of these to Speed up Engineering work both in relation to Technical Specifications and Descriptions and as well defining the Pipe Series in the 3D design tool of choice – AVEVA PDMS, REVIT or similar.

The Training Course covers

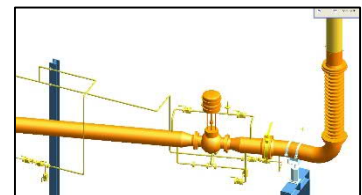
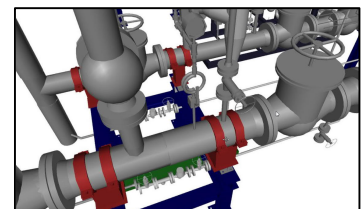
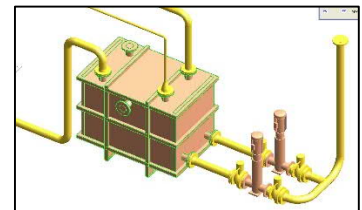
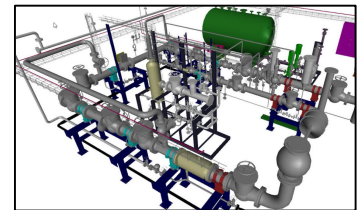
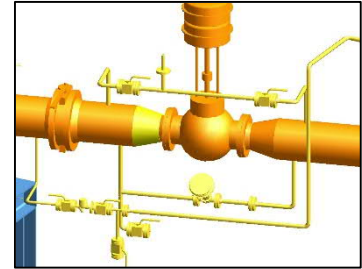
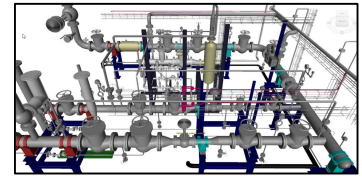
- PED Rules
- Test Pressure Calculation
- EN13480 Design rules
- Strength Calculation of Tubes, Tees, Elbows, Bends, Olets etc.
- Material Series – Cast Iron, Carbon Steel, Duplex, Cobber based, Stainless Steel, Polymer etc.
- Assembly Methods – Pressing, Compression, Glue, Welding etc.

Training will also cover

- Insulation Specification Definition – Type, Thickness, Range of Use etc.
- Surface Treatment – both on the Tube itself and on top of insulation.

Contact Information:

Christian Pallesen; +45 2526 8805; [cp@p-engineering.dk](mailto:cp@p-engineering.dk)



*Pictures of Steam Installations from Waste Incineration Plant and Industrial Plant.*