

## Directives: PED EU/2014/68 TC-001

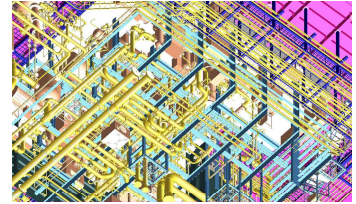
The Pressure Directive guides all installation with a pressure above 0.49 barg within EU and EØS. The Training Course gives an introduction into the ruleset within PED.

- Ruleset scope
- PED Categories
- PED Modules rules for
  - Design
  - Pipe Isometrics
  - 3<sup>rd</sup> party review
  - Manufacturing
  - Handover
- Pressure Testing – how to calculate the correct test pressure
- Design Standards
- Geometry Standards
- Practical Implications
- Exception – for example Malleable casted fitting developed pre-PED and still in use based no exceptions
- CE-Marking of pressure Installations
- ASME, ANSI & AISI – can it be handled within the PED set of rules?

Training Course gives a general introduction to above issues and gives the trainee tools and direction for where to find the necessary information's.

### Contact Information:

Christian Pallesen; +45 2526 8805; [cp@p-engineering.dk](mailto:cp@p-engineering.dk)



*Pictures of pressure testing with air (allowed within the ASME world, Cooling Central on LNG gaster which was after GL-rulesets. Below pictures of heating central and ethanol distillation plant.*