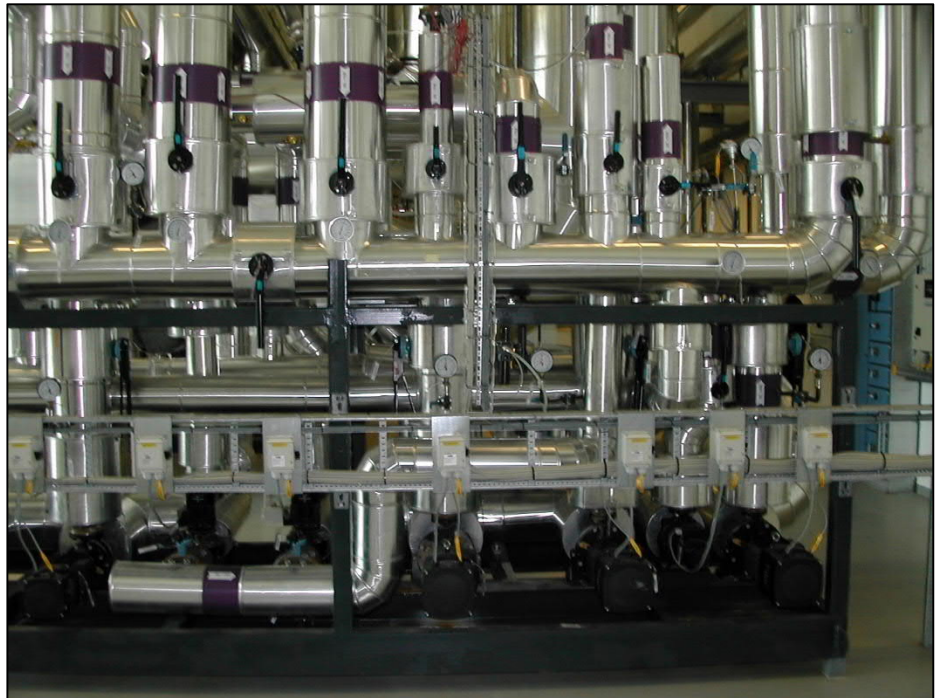
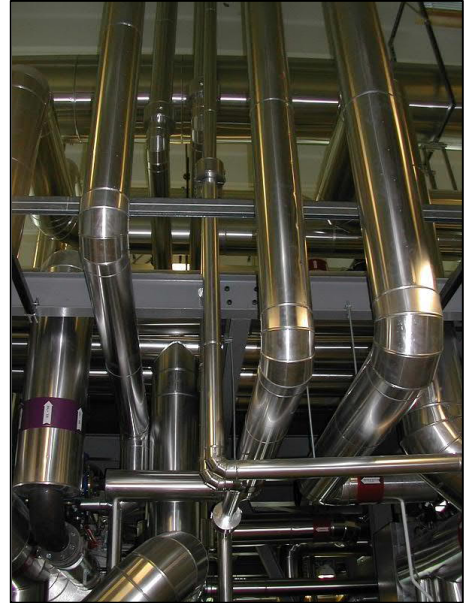


Steam Boiler Plant 20t/h@8 R-311



*Pictures from a Steam Boiler Plant for a Pharmaceutical Factory (Denmark).
Production of 2 times 10 barg Steam @ 8 barg for distribution in plant.*

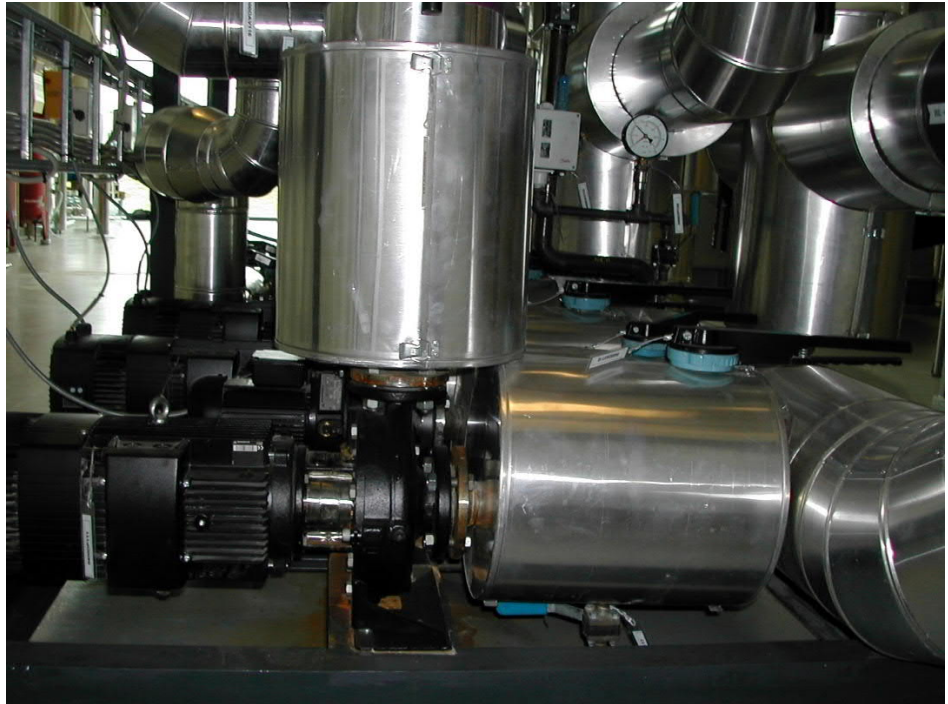
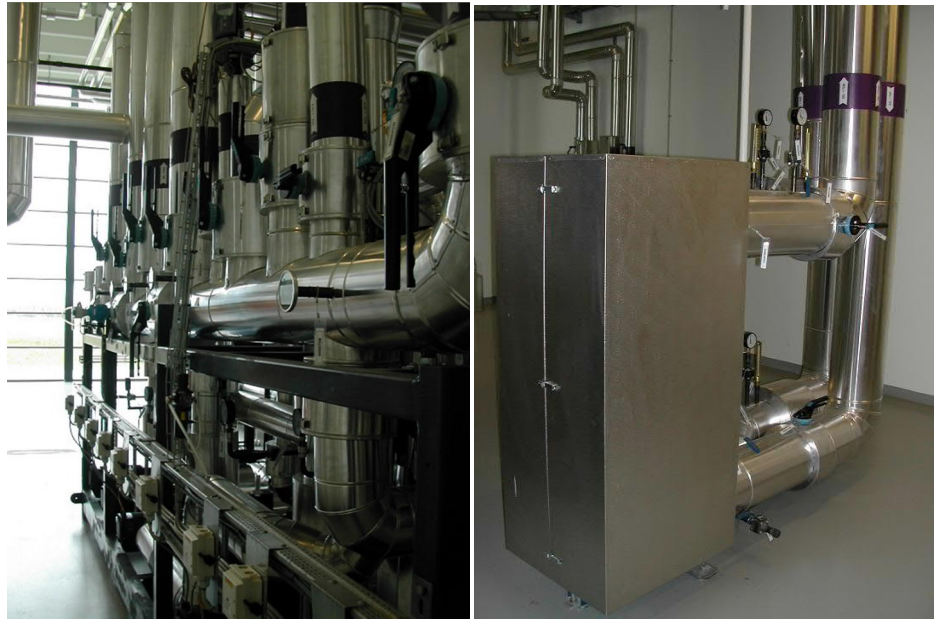
*Feed water was produced by gathering Bleed off water from the WFI unit and
therefor no Water Treatment Plant Was necessary. Blow-down water and waste
condensate was exported to Neutralization Plant. Hot Water for Heating was
produced with Flue Gas Condensation and further Steam Power Plat Heat
Exchangers.*

*P-Engineering made overall Design – Mechanical, Piping, Electrical (MCC, Cable
Tray and Cabling), Instrumentation and Control system, Installation and
Commissioning in the period 2001/2002.*

Plantware

Steam Boiler Plant 20t/h@8

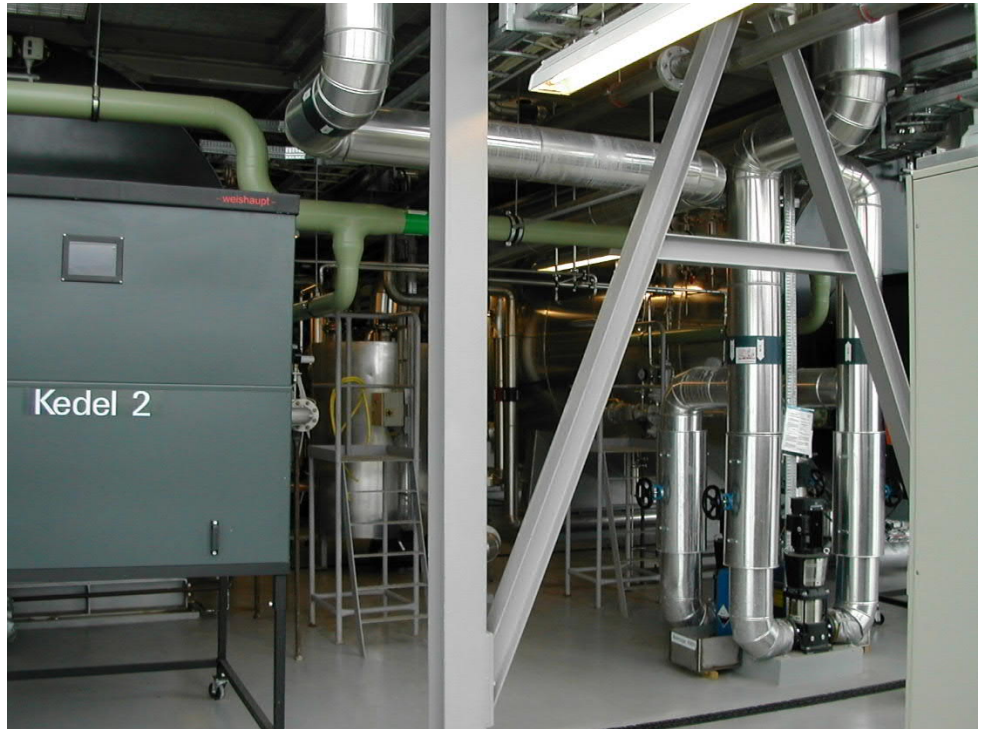
R-311



Plantware

Steam Boiler Plant 20t/h@8

R-311



Pictures from a Steam Boiler Plant for a Pharmaceutical Factory (Denmark). There were 3 off heating system. Circulation was handled with one Skid Mounted Unit.

Above show the area between the 2 Boilers with internal equipment for the Steam Production and on picture below the main water Manifold, Hot Tap Water Production, Expansion Units and Feed Water Collection is shown.

Plantware

Steam Boiler Plant 20t/h@8

R-311

