

Plantware

Distillation Plant

Project Details

Project	New Distillation Plant
Client	BASF A/S
Contractor	BASF A/S
Built	Grenaa, Denmark
Year	2000

In 2000 BASF Health & Nutrition A/S needed to build a new distillation facility at their existing factory in Grenaa, Denmark. The new facility was installed into the existing steel towers.

PlantWare made 3D plant design of a new installations including various systems such as

- Methanol pipes
- Steam pipes
- Condensate pipes
- Cooling pipes (grader system)

Detailed arrangement of pumps and exchangers were made for coordination with the electrical and instrumentation packages. From the 3D model we produced

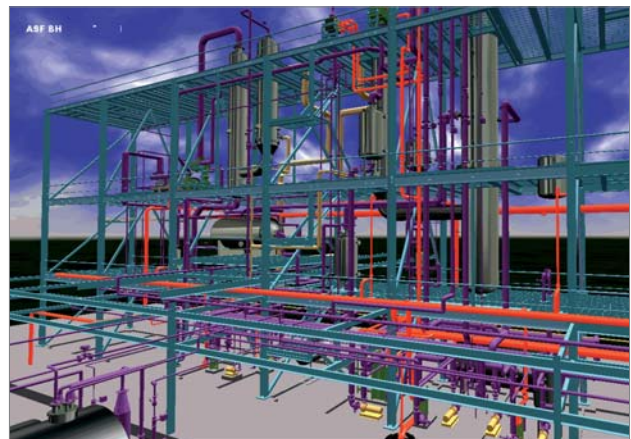
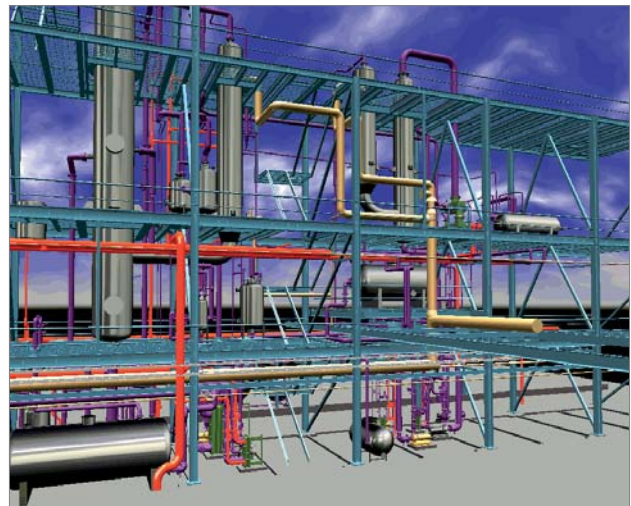
- General arrangement drawings (section flat, section perpendicular and isometric drawings)
- Foot print drawings of equipment
- Detailed arrangement drawings
- Pipe isometrics for fabrication
- Isometric pipe drawings for erection
- BOM - bill of material

Furthermore, PlantWare made follow up on site with pipe contractor.

Contact



Christian Pallesen
Mobile: +45 2526 8805
Email cp@p-engineering.dk



Plantware

Distillation Plant

