

Plantware

Platforms and Access Stairs for Waste Incineration

Project Details

Project	New Environmental Measurements
Client	Vestforbrænding I/S
Contractor	PlantWare
Built	Copenhagen, Denmark
Year	2004

The flue gas duct from the new line 6 needed extra measuring nozzles for environmental measurements. PlantWare handled design, procurement, fabrication and construction of the platform and access stairs.

The design criteria was a hanging platform as the main electrical cables for Vestforbrænding Unit 6 was placed directly in the ground under the area, where the platform should be erected.

PlantWare's delivery consisted of:

- Platforms and access stairs and ladders mounted outside the building.
- Platform inside the FGD-building for the measuring equipment to be placed
- Measuring nozzles in the flue gas duct
- Modifications on the facade of the FGD-building

The structure was based on PlantWare standard platforms and the engineering and steel detailing was based on AVEDA PDMS.

Contact

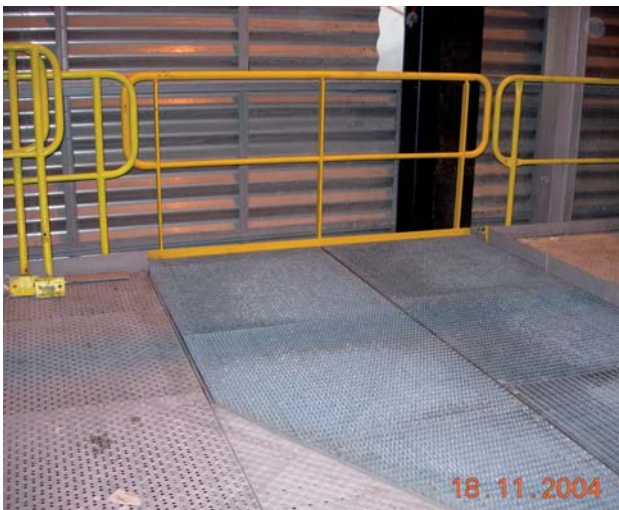
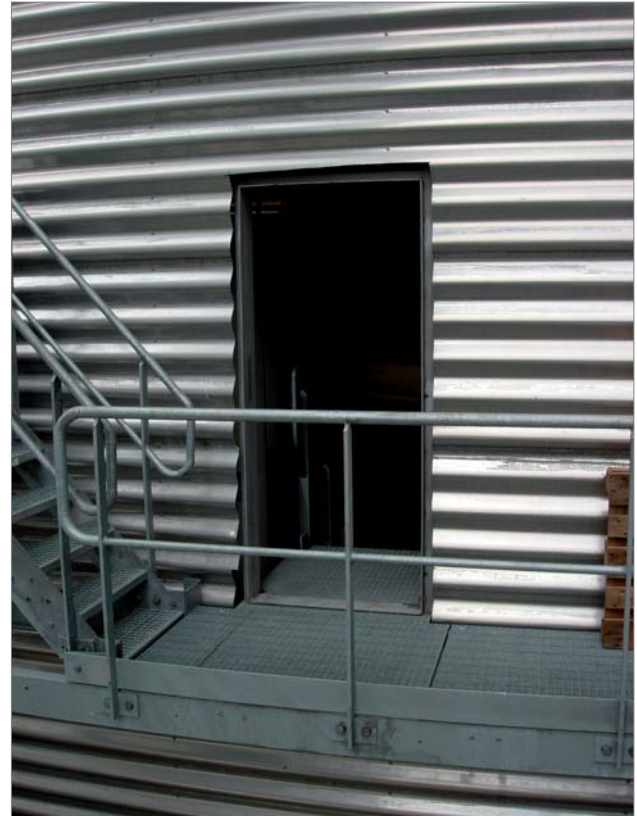


Christian Pallesen
Mobile: +45 2526 8805
Email cp@p-engineering.dk



Plantware

Platforms and Access Stairs for Waste Incineration



New platform inside the FGD building, where the computers for the measurements would later be placed.

Assembly detail during construction of the platforms placed outside the platforms. This part was placed outside the FGD building.