

CATLIQ Bio-Diesel Plant

Project Details

Project	CatLiq Demo Unit
Client	Grundfos A/S & SCF Technologies A/S
Built	Bjerringbro, Denmark
Year	2009

PlantWare has made mechanical engineering of a new CATLIQ plant. The plant is built in four 40' containers. The overall design data for the plant is a pressure of 325 bar and a temperature of 400°C.

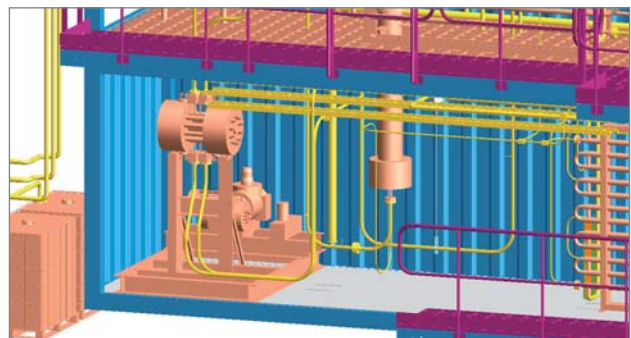
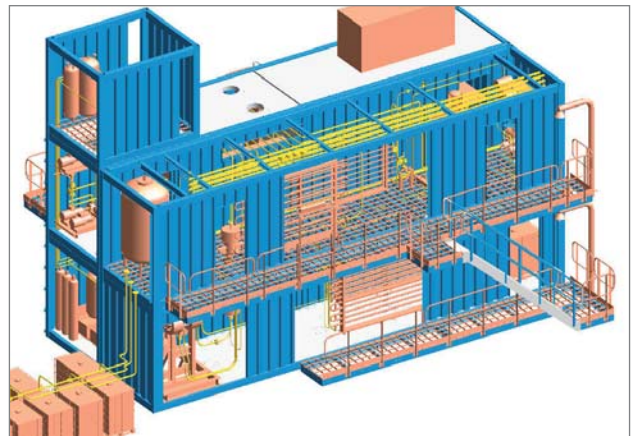
PlantWare has made

- General arrangement of the process plant.
- Detail engineering of pipe work - detail calculations of wall thickness, olets, bends etc. according to EN 13480, and flanges according to EN 1591.
- Pipe flexibility calculations according to EN 13480 based on ROHR2 software from Sigma GmbH (www.sigma.de).
- General arrangement of platforms, access stairs and ladders.
- Basic engineering of container modifications.

Parts of the piping is made of INCONEL 625, and with a price above €1000 per kg an optimized pipe design has really been in focus.

The unit converts any biological material to BioDiesel based on catalyst process. Please visit www.scf-technologies.com for more information.

The project is a up-scaling of the Catliq demo plant built in 2007, for which PlantWare also made detail engineering.



Contact



Plantware

CATLIQ Bio-Diesel Plant

