

Plantware

Bio-Diesel Unit

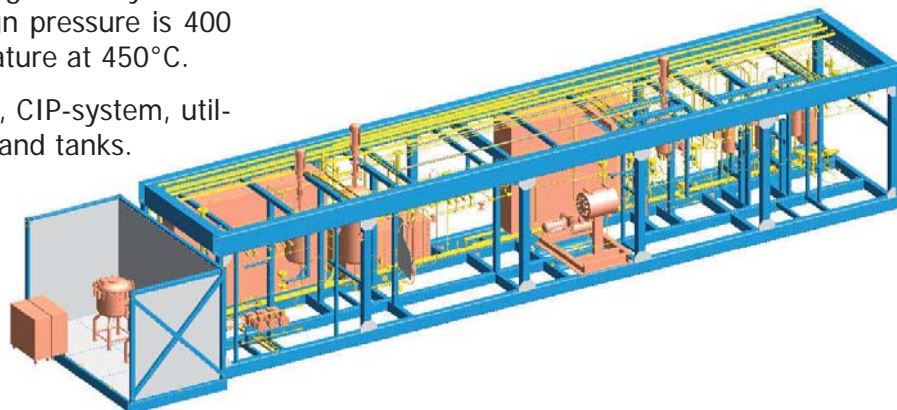
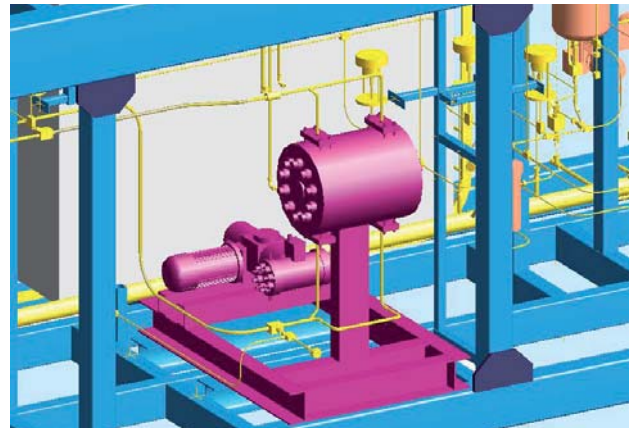
Project Details

Project	CatLiq Unit
Client	SCF Technology A/S
Built	Copenhagen
Year	2006

PlantWare has for SCF Technologies A/S made detailed mechanical engineering of a CatLiq unit for biodiesel production.

The unit is 3.50 by 3.50 meters in cross section and 14 meters long placed in a self supporting frame enabling SCF Technologies easily to lift and move the unit. The design pressure is 400 bar with an operating temperature at 450°C.

PlantWare design process line, CIP-system, utility system and blow off pipes and tanks.



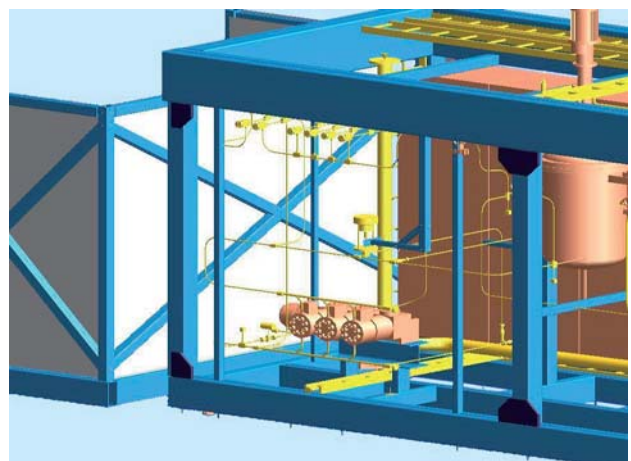
PlantWare designed

- Piping installation
- Pipe supports
- Steel frame/structures
- Cable trays
- Blow-off tanks

PlantWare delivered

- GA - general arrangement drawings
- DA - detailed arrangement drawings
- Piping isometrics
- Isometric pipe drawings
- Steel detailing for pipe support
- Steel detailing for steel frame
- MTO lists for piping components
- MTO list for steel elements

The unit was manufactured in Austria by Innoweld GmbH.



Plantware

Bio-Diesel Unit

