

# Plantware

## Plant Design

PlantWare is an engineering company specialized within Plant Design: from preliminary layout over basic design to detail design with full documentation for manufacturing of piping, steelwork, ducting etc. We enables our client to make pre-fabrication based on detailed project.

Our engineering services covers many types of plants: pharmaceutical and biotech, food, power, waste incineration and chemical plants.

We use 3D AVEVA PDMS® software for mechanical design and generation of drawings, pipe isometrics for fabrication, steel detailing etc.

We have included examples from projects within

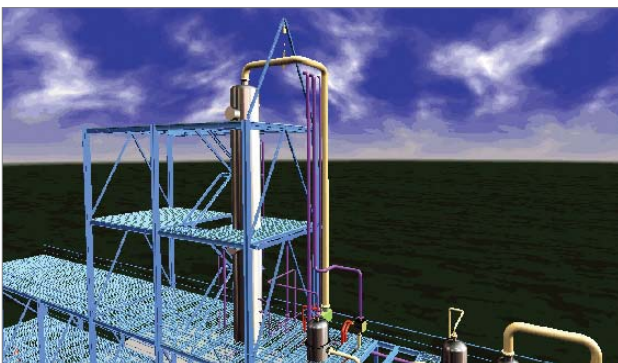
- building utility
- food
- pharme industry
- chemical Industry



Process Module for WFI Distribution for CHRIST Nordic AB



ARLA Foods; Boiler Installation @ Taulov Mejeri for LH-Rørbyg A/S



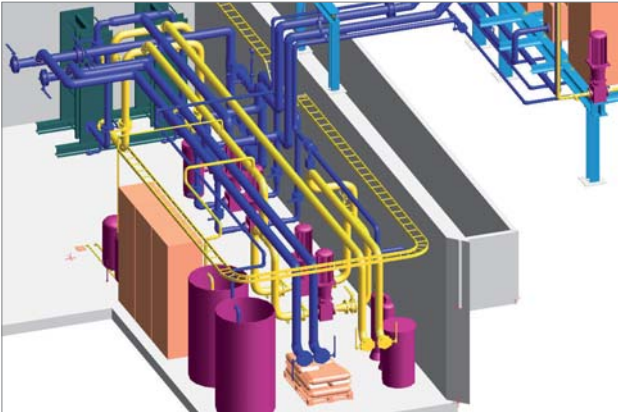
BASF A/S, Destillation Columns



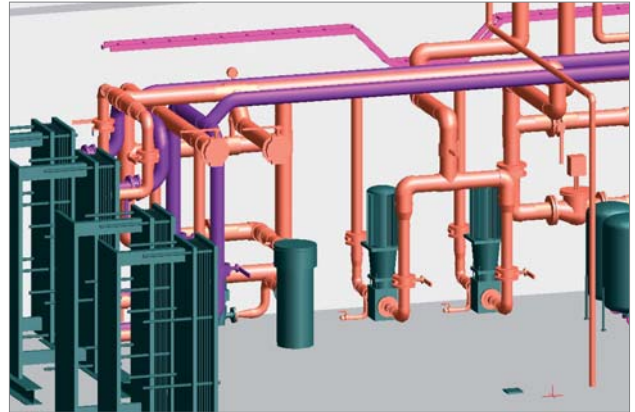
BASF A/S, Destillation Columns

# Plantware

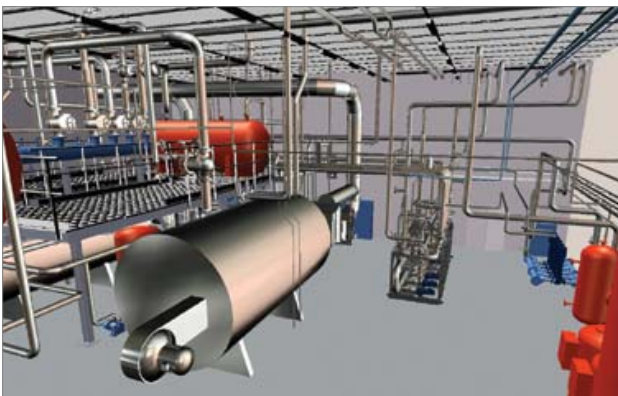
## Plant Design



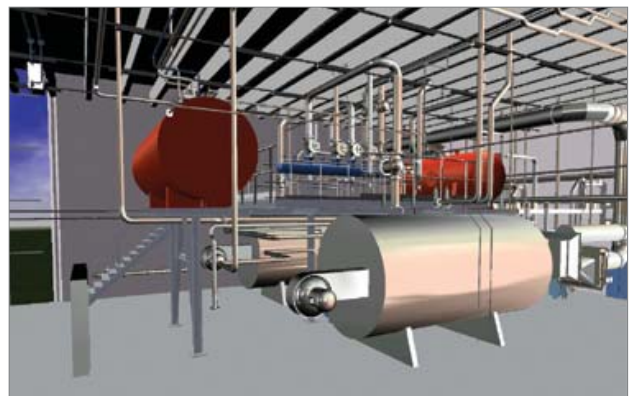
Cooling Installation @ Danfoss A/S for Rambøll A/S



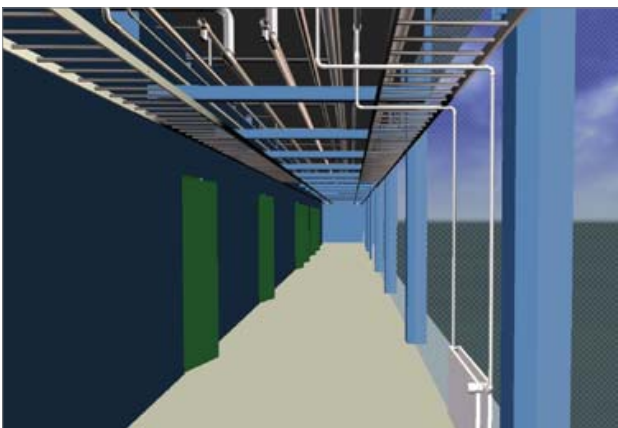
Cooling Installation @ Danfoss A/S for Rambøll A/S



Boiler Installation, Pharmaceutical Plant, Denmark



Boiler Installation, Pharmaceutical Plant, Denmark



Utility Installations @ CMC Biopharmaceuticals A/S



Process Installations @ CMC Biopharmaceuticals A/S