

Mech. Design: Straw Recep.

P-761

Design of Straw Reception de-Facilities for e.g.,

- Biomass Incineration
- Wax Extraction
- Other

Intake: Weighting and Moisture Detection of each Straw Bales
Storage: Crain Storage with Location optimization during off-time, where placement is optimized after age and moisture. Storage facility designed according to Fire Strategy Plan.
Feeding Line: Feeding line with Fire Compartment Fire dampers at the boundary of the Straw Storage Area.

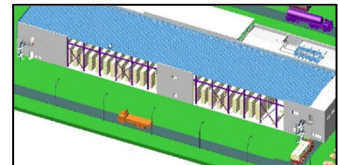
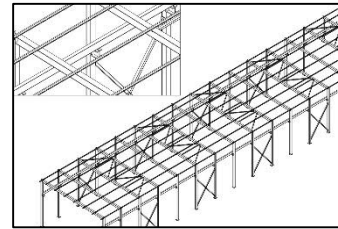
Design includes:

- PFD & PID
- General Arrangement
- Equipment Specification – Crane, Weighing Cells etc.
- Steel Structure Design and Detailing
- Platform and Access Way
- Reinforced Concrete Design
- QA/QC Documents
- FAT & SAT protocols
- Process Control Specification and SCADA Definitions.

P-Engineering uses MS Access for User interface and Database engine can be Desktop or Server Solution.

Contact Information:

Christian Pallesen; +45 2526 8805; cp@p-engineering.dk



*Top Picture shows details of Steel Structure with support for Rail for Portal Crane.
Middle Pictures Shows Overall Design of Straw Reception with Intake/ Weighing, Storage and Feeding Line.
Bottom Picture is a close-up of a Straw Shredder*