

## Struc. Steel; Special Platform

### P-541

Solutions for Special / Bespoke Platforms capable of Heavy Loads from e.g., Heavy Trucks.

P-Engineering designs special solution for both Greenfield Project as well as revamp of existing Plants, where P-Engineering handles onsite measuring.

Steelwork designed according to Eurocode and all platforms are furthermore designed safety wise according to EN 14122 for ball proof Ø20 as standard.

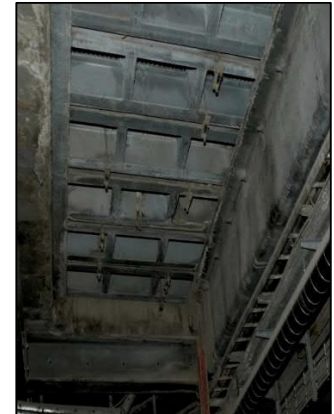
Pictures are from [ARC](#) (Amagerforbrædningen I/S) where some platforms over Crane Hoist Holes in the Concrete Slab needed Platforms easy to remove. Design criteria was

- Handling axle load of 16t from a Truck (point load).
- None of the existing installations should be moved or changed
- No bending moments to be applied to concrete Slabs.
- Easy removal of Platform Frames for Crane Hoisting applications.

P-Engineering makes final Shop Drawings for Structural Steelwork, Platform Base Frames, Stairs, Ladders and final BoQ for e.g., Gratings, Bolts and nuts, Adhesive Anchors etc.

Contact Information:

Christian Pallesen; +45 2526 8805; [cp@p-engineering.dk](mailto:cp@p-engineering.dk)



*Pictures from [ARC](#) (Amagerforbrædningen) where platforms were designed and delivered as EPC.*