

Platform: Industrial Eurocode P-501

Design of Platforms, Access Ways, Stairs and Ladders for Industrial purpose:

- Chemical Plants
- Power Plants
- Waste Incineration Plants
- Storage Facilities / Tank farms
- Building Utilities
- Pharma, Biotech and API

according to Eurocode and EN 14122. Our Standard Design is based on 2 off design series:

- Normal 350 kg/m²
- Heavy 500 kg/m²

Bespoken design criteria's can also be handled. P-Engineering does 3D Layout of Platform System as well as Detailed 2D GA Drawings. Shop Drawings and IFC models for

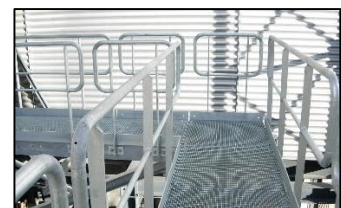
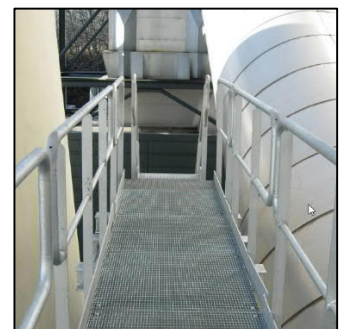
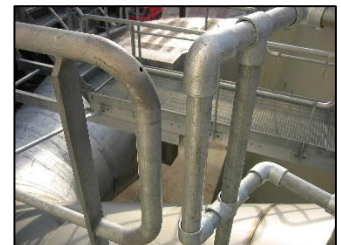
- Structural Steelwork
- Platform Base Frames
- Handrail Sections
- Stairs and Ladders
- Mounting frames for e.g., Instrumentation, Fire Fighting Equipment, Lighting Fixtures

and final BoQ for e.g.

- Gratings Platform
- Gratings Stair Steps
- Bolts, Nuts & Washers
- Adhesive Anchors etc.
- Special Solutions

Contact Information:

Christian Pallesen; +45 2526 8805; cp@p-engineering.dk



Pictures from I/S Vestforbrændingen where platforms were designed and delivered as EPC.