

## Marine: Machinery Room

### P-471

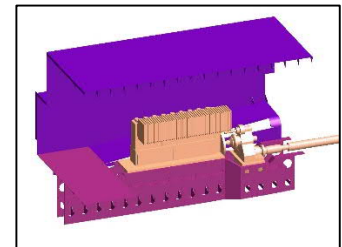
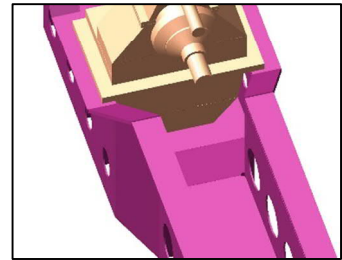
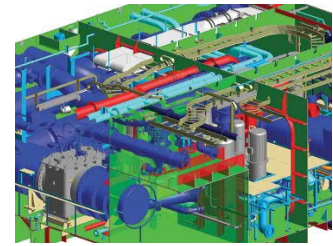
Design according to 'Germanischer Lloyd' or other Classifications of Technical Installation of Machinery Rooms:

- PFD and PID
- Process Calculations and System Sizing
- Functional Descriptions
- Pipe Spec. Definitions
- Insulation Spec. Definition
- Flue Gas Ways – Ducting, Compensators, Supports, Heat Recovery Exchangers and Silencer Design
- Ventilation
- Piping
  - Compressed Air,
  - Fuel Supply – Marine Diesel and Heavy Fuel
  - Lubrication Oil System
  - Cooling, Sea Water
  - Cooling, Refrigerant
  - Heating System
  - Ballast System
  - Fire Fighting
- Access Ways, Gangways and Platforms
- Cable Tray
- Equipment Arrangement – Mechanical and Electrical
- Instrumentation

P-Engineering uses AVEVA PDMS, Conval®, Pipeflo®, and database applications for the overall Design. 3D model is setup for CoG calculations.

Contact Information:

Christian Pallesen; +45 2526 8805; [cp@p-engineering.dk](mailto:cp@p-engineering.dk)



*Pictures from a RoRo ferry for Flensburger Schiffbau-Gesellschaft / Flender Werft and from Stella Shipping 4100 BRT Cargo Ship – investigation into Main Motor and Main Gear Foundation.*