

Waste Incineration: FGD Plant P-416

Design of FGD Plant for Waste Incineration Plants:

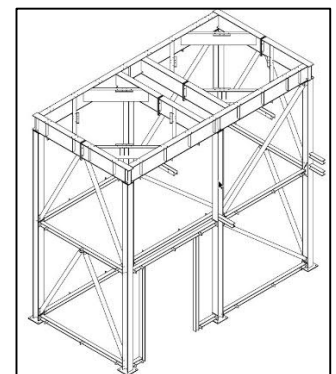
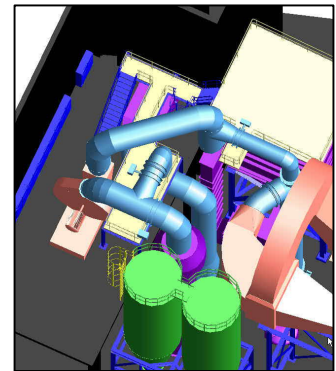
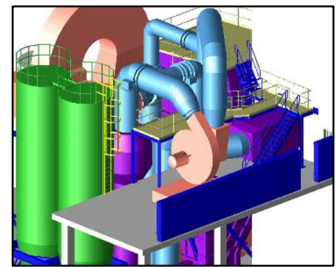
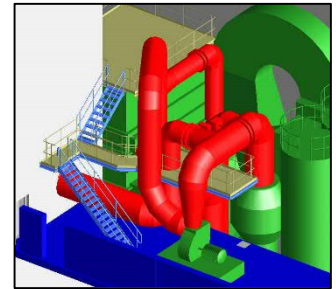
- General Arrangement
- PFD and PID
- Functional Descriptions
- Structural Steel
- Platforms and Access Ways
- Support Structures for Equipment, Vessels and Silos, Ducting and Piping
- Piping – Black & Stainless Steel and Plastic
- Cable Tray and Electrical Equipment (glued and welded)
- Equipment Specification
 - Pumps
 - Compressors
 - Fans
 - Vessels
 - Silos
 - Screw Conveyers
- Electric Design
 - Lighting
 - MCC
 - PDB
 - Equip-Potential Bonding
- Load Plans
- Plant Documentation
- Maintenance Specifications

P-Engineering has reference from doing project for LAB (FR), AL-STOM (DK), GM (SE) and ABB (SE)

P-Engineering uses e.g. [AVEVA PDMS](#) Software for 3D design and [SolidWorks](#) for Mechanical Detail Design.

Contact Information:

Christian Pallesen; +45 2526 8805; cp@p-engineering.dk



Pictures for design of ducting for a FGD at Waste Incineration Plant in Denmark.

Plantware