

## Building Utility: Hot Tap Water P-333

Unit for Production of Hot Tap Water based on Vessel with Internal Heating Coils. Request for solution may depend on the local Utility Company. The design is in line with a Unitized Design philosophy aiming at speeding up the site construction works.

This System Contains of

- Vessel 1.0 to 1.6 m<sup>3</sup>
- Heating Coils in Vessel 80 to 150kW
- Circulation Pumps 2x70%
- Control Valve
- Balancing Valves

Design package contains off:

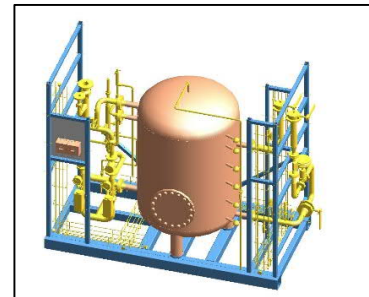
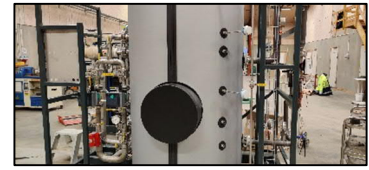
- PID and Sizing Documents
- 3D Arrangement
- Pipe Design; EN 13480
- Support / Steel Frame Design
- Control Valve Sizing
- Heat Exchanger Sizing
- Instrumentation
- Pump Sizing
- MCC and Electrical Supply
- Cabling Power & Instruments
- Process Control

For all areas manufacturing drawings will be created – PFD, PID, Piping Isometrics, Support, MCC Single Line Diagrams etc.

P-Engineering will use [AVEVA PDMS](#) as 3D software and [DXT-software](#) for pipe and vessel calculation.

Contact Information:

Christian Pallesen; +45 2526 8805; [cp@p-engineering.dk](mailto:cp@p-engineering.dk)



*Pictures from Manufacturing of a Hot Tap Water Unit as well as 3D arrangement of the unit.*

*For Pass-through Heat Exchangers (DK: Gennemstrømsveksler) please see presentation P-331, where these can be integrated with Unit for Central Heating.*