

Pharma: Clean Room Design P-291

Design of Clean Room –
Laboratories & Production – for

- Pharmaceutical & Life Sciences
- API & Chemical Production
- Biotech

Design of interior and outfitting as
well as design of utility Supplies.

Utility Supplies:

- Water – Raw Direct feed
- Water – WFI or HPW Loop
- Steam – Raw and/or Clean with
Emergency Shut-off
- Condensate Collection
- Ethanol Supply and Collection
through Special Drains.
- Heating Supply
- Cooling Supply
- Chemicals – Lye, Acid etc.
- Air – Standard and Clean
- Buffer Prep. Supply Lines

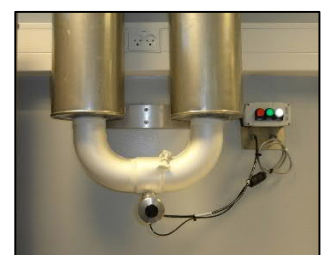
Interior and Outfitting

- Ventilation – Comfort, Clean with
HEPA filtration and controlled
with Humidifying.
- Walls, Floor and Ceiling with
specification of Surfaces
- Electrical Installations in Clean
Room execution – ATEX
- Arrangement with LAF-benches,
Suction arms, Work Benches,
Freezers, Heating Cabinets etc.

P-Engineering does the design from specification or in
cooperation with e.g., architects or end-users.

Contact Information:

Christian Pallesen; +45 2526 8805; cp@p-engineering.dk



*Pictures of Clean Rooms
from API and a Contract
Manufacturer.*