

## Parma: Equip. Spec. Rotating P-271

P-Engineering can help Clients Specify Rotating Equipment either as a part of the General Design assignment or as a Specific Task:

- Pumps Circulation/High Press.
  - Centrifugal
  - Screw
  - Gearbox
- Separators – Centrifuges
- Compressors – Air, Nitrogen
- Generators – General and Emergency Electric Generation
- Fans – Process e.g., extraction
- Fans – Ventilation
- Agitators and Mixers

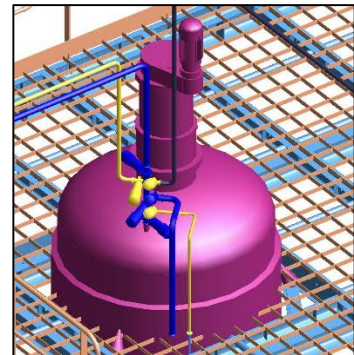
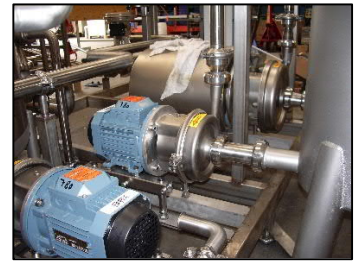
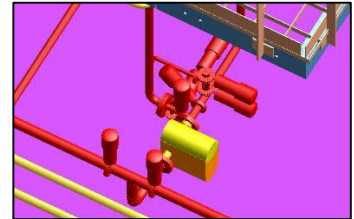
Specification regarding e.g.,

- General Specification
- Sizing - Operation Point on Curve, Operation Safety etc.
- Electric Operation
- Instrumentation
- Cleaning Request and Surface Specification
  - External – Cover Hood
  - Internal Process Line
- Drain and Cleaning Nozzles
- Equi-Potential Bonding
- ATEX – Requirements/Zoning
  - Fluids
  - Solids / Powders
- Risk Analysis Concern
- FAT & SAT Test Report

P-Engineering e.g., PipeFlo® for Pressure Loss Calculation and Pump Sizing

Contact Information:

Christian Pallesen; +45 2526 8805; [cp@p-engineering.dk](mailto:cp@p-engineering.dk)



*Pictures from A) 3D of Sugar solvent Transfer with Gearbox Pump B+C) Pump Installation for a Bear Dilution Unit and C) 3D of Spray Dryer Feed tank with Agitator.*