

## Pharma: Ultrafiltration Install. P-237

P-Engineering performs design Ultrafiltration Installation for e.g.,

- API-Factories
- Pharma & Biotech
- Food & Beverage

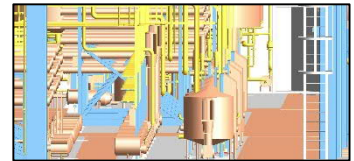
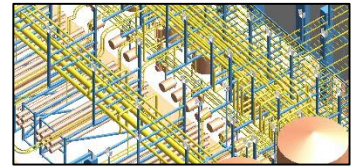
With full Detail Engineering Package for

- GA – General Arrangement
- DA – Detail Arrangement
- Pipe Design
  - CIP – Loops
  - Heating Supply
  - Product Lines
  - Utility Support Lines
- Fabrication Pipe Isometrics
- Vessel Design for Misc. Process Tank Pressure less
- Vessel Design for e.g., Condensate Collection etc. Pressurized
- Pipe Support with Fabrication Drawings
- BoQ for FRQ for
  - Pipe Items – Fittings and Tube
  - Pipe Welding's by Size and Quality
  - Steelwork by profile type
- Cable Trays Arrangement – Power, Signal & Network
- Electrical Equipment Arr.
- Control Equipment Arr. like Remote I/O Cabinets.

P-Engineering uses AVEVA PDMS for 3D, Solidworks for Vessel Design, DXT software for EN13480 design.

### Contact Information:

Christian Pallesen; +45 2526 8805; [cp@p-engineering.dk](mailto:cp@p-engineering.dk)



*Pictures from a very large Ultrafiltration Installation in Food & Beverage Business – Lactose Production - placed in Germany.*