

Equi-Potential Bonding

P-184

Design of Equi-Potential Bonding according to HD 60364 Standard and for Denmark: "Sikringsstyrelsen" interpretation and recommendations.

Installation
Equip-Potential Bonding according to the Standard and furthermore, to reduce Electrical Noise and Problems with Current from e.g. Static electricity or which can wear out Roller Bearings quite fast.

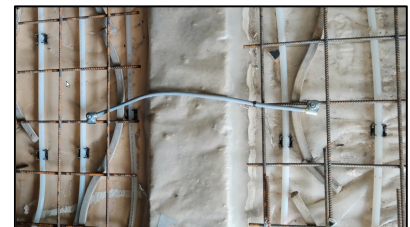
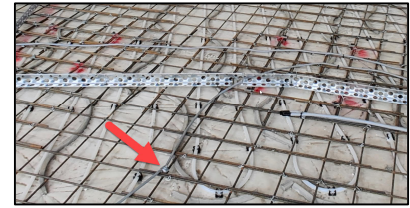
Concrete Reinforcement
Full Bonding of all Rebars etc. in both prefab and in situ casted Concrete Structures from Ground Level and Below. Cost and Time reducing Solution in cooperation with Structural Design Company.

Steel Structures
Bonding of Steel Structures – e.g., Column Foundation and throughout the whole Structure.

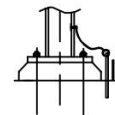
Building
Bonding of Façade Elements, Doors, Elevators (preventing interference with e.g., Access Control Readers) etc.

Contact Information:

Christian Pallesen; +45 2526 8805; cp@p-engineering.dk



NOTE: If equi potential bonding/earthing shall be applied, a separate spike shall be used.



Example of Equi-Potential Bonding in Concrete floor, for Process Installation and Column Foundation from P-Engineering Standard Drawing.