

## Pipe Design: Venturi Design P-180

Design of Venturi Solutions for measuring of Gas Flow:

- Air – PA and SA Air
- Flue Gas – ID, FGD or other

The Venturi Utilizes the [Bernoulli](#) Theory of Constant Total Pressure as a sum of Dynamic and Static Pressure. The Venturi is very accurate and not leave any significant permanent Pressure Loss.

### Design Package

P-Engineering can deliver a design package for fabrication with Detail Drawing, Instrument Specification, Instrument Tubing, Instrument Hook-up Drawings, Calculation of Measuring Range, Nozzle Design, Duct Reinforcement Design etc.

### Equipment Package

P-Engineering can further deliver the Loose Items as an Equipment Package for built onto Ductwork with Endress & Hauser Instrumentation and LCP with Signals (4-20mA) for

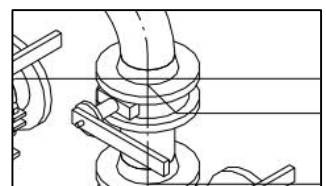
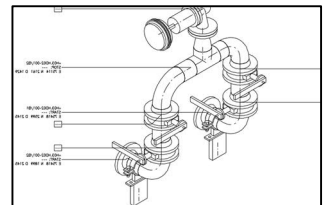
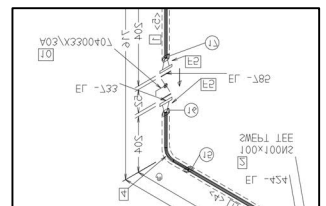
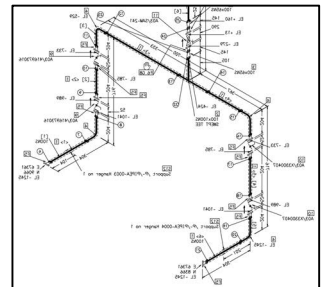
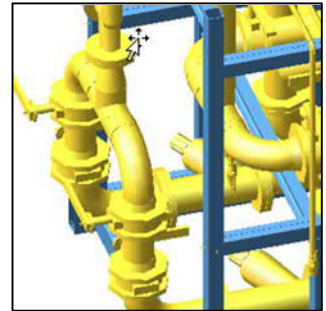
- Temperature
- Flow
- Static Pressure

P-Engineering uses e.g.

- [Solidworks](#) Design Software for 3D design
- P-Engineering's own Duct Design Tool

### Contact Information:

Christian Pallesen; +45 2526 8805; [cp@p-engineering.dk](mailto:cp@p-engineering.dk)



*Pictures of same Pipe as Pipe Isometric and Isometric Pipe Drawing.*