

## Waste Installation: Bio Waste P-145

Design of Systems for handling of Bio Waste from Industrial Kitchens.

Design of Piping Installations and Vessel for either Ground or e.g., Basement Installation.

### Piping:

Design as Welded Piping in Pharma Grade with internal Surface requirement  $Ra < 0.8 \mu m$  to

### Vessel; Ground Installation:

Design of Vessels for in ground Installation with buoyancy protection.

### Scope of Work:

We Supply the Following

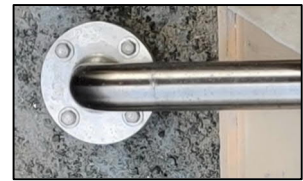
- PIDs
- Process Calculations
- Pipe Design including of Pipe Isometric for fabrication
- Pipe Support
- Buoyancy Protection
- Instrumentation
- MCC and Cabling Project
- BMS including SMS service for Emptying of Vessel by Operator
- Surface Protection (Corrosion)
- Equi-Potential Bonding

P-Engineering uses e.g.

- [AVEVA PDMS](#) Software for 3D design
- [PIPE-FLO®](#) Pipe Sizing and Pressure Loss

### Contact Information:

Christian Pallesen; +45 2526 8805; [cp@p-engineering.dk](mailto:cp@p-engineering.dk)



*Pictures of Pharma Grade Waste Piping and an overview of vessel in the ground with buoyancy protection straps.*