

## Waste Installation: Fatty

### P-143

Design of Systems for handling of Fatty Wastewater from Industrial Kitchens, Industries etc. Design of Piping Installations and Vessel for either Ground or e.g., Basement Installation.

#### Piping:

Design as Welded Piping in Pharma Grade with internal Surface requirement  $R_a < 0.8 \mu\text{m}$  to secure full drain ability with reduced slope.

#### Vessel/Separator:

See [https://p-engineering.dk/onewebmedia/P-146\\_WasteSeparatorFattyOily\\_Rev01\\_CP\\_2021-05-23.pdf](https://p-engineering.dk/onewebmedia/P-146_WasteSeparatorFattyOily_Rev01_CP_2021-05-23.pdf)

#### Heat Trace:

Installation of Heat Trace for Piping to keep Pipe Temperature approximate  $38^\circ\text{C}$  during operation.

#### Scope of Work:

We Supply the Following

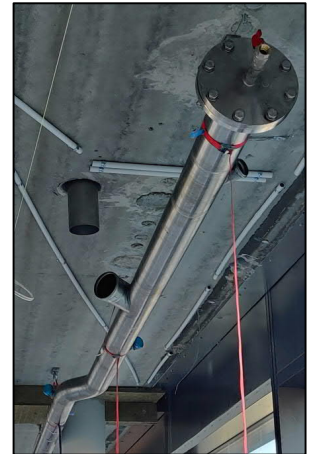
- PFD and PIDs
- Process Calculations and Pipe Sizing
- Pipe Design including of Pipe Isometric for fabrication
- Pipe Support
- PDB and Cabling Project
- Equi-Potential Bonding
- Heat Trace Design with LCP and Temp. Sensors
- Insulation Specification for Heat Trace Piping in Building and in Ground

P-Engineering uses e.g.

- [AVEVA PDMS](#) Software for 3D design
- [PIPE-FLO®](#) Pipe Sizing and Pressure Loss

#### Contact Information:

Christian Pallesen; +45 2526 8805; [cp@p-engineering.dk](mailto:cp@p-engineering.dk)



*Pictures of Pharma Grade Waste Piping and an overview of vessel in the ground with buoyancy protection straps.*

# Plantware

---