

## Central Cooling: Mixing Loops P-135

P-Engineering designs Standardized Mixing Loops for Cooling Supply to AHU Heat Exchangers. The Mixing Loops are equipped with Industry Standard Control Valve for precise operation within a large range of operation. Furthermore, the Mixing Loops have multiple Nozzles for Verification of Operation during Commissioning.

P-Engineering makes detail designs including:

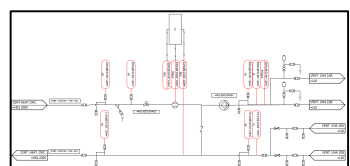
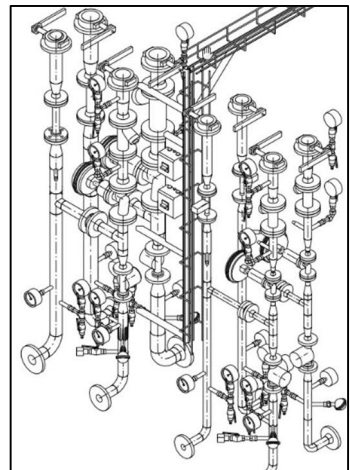
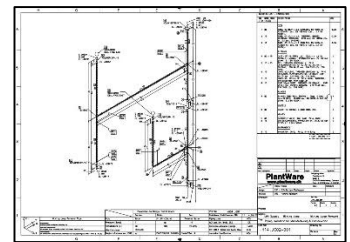
- PID
- Overall Sizing
- Pipe Design for Fabrication
- Control Valve Specification
- Equipment Specification - Pump, Filter, and Valves
- Instrumentation – Temp., Pressure and Energy Meter
- Insulation Specification
- Surface Treatment Specification – Pipe and Insulation
- MCC and Power Supply
- Cabling Project – Signals, Bus, Network and Power
- BMS – General Descriptions, Functional Description and SCADA Specification

P-Engineering uses e.g.

- [AVEVA PDMS](#) Software for 3D design
- [PipeFlo®](#) for Pipe Sizing and Pump Selection
- [CONVAL®](#) for Control Valve Sizing and Selection

Contact Information:

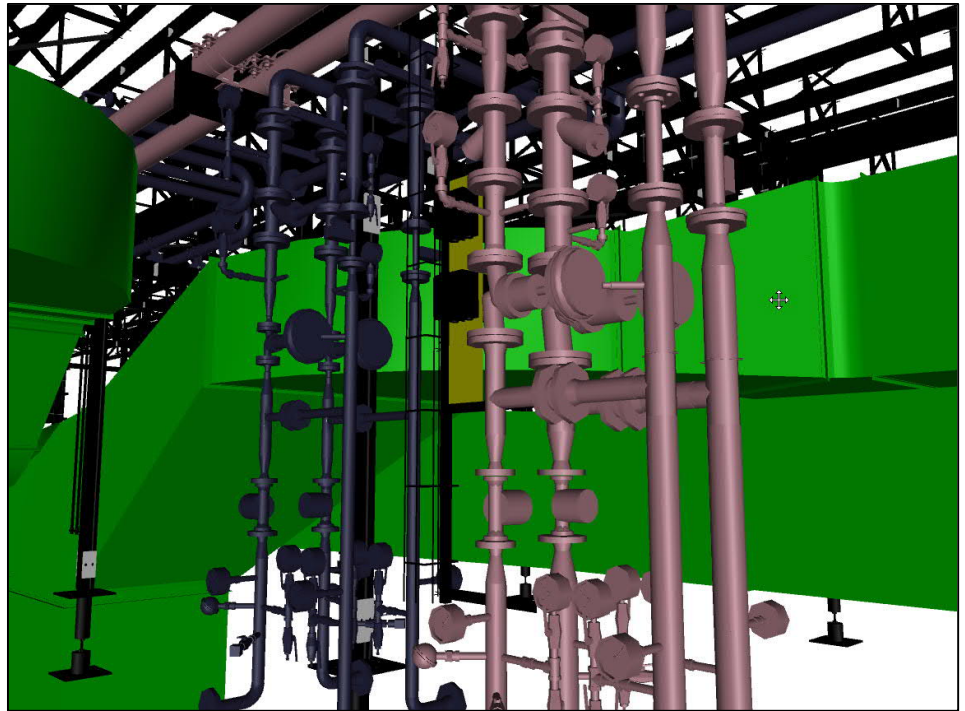
Christian Pallesen; +45 2526 8805; [cp@p-engineering.dk](mailto:cp@p-engineering.dk)



*Construction of a group of Mixing Loops with Fabrication Drawings.*

## Central Cooling: Mixing Loops

### P-135



*3D Model of Mixing Loops for both Heating and cooling for Supplying AHU Heat Exchanger. Mixing Loops were hung in the Main distribution Piping to avoid Support on the Felt Roofing*

