

## Central Cooling: Prod. & Circ.

### P-132

Design of Pre-fabricated Units or On-site built Installations for producing Central Cooling based on District Cooling.

PED – Pressure Directive:

Design according to PED and detail design according EN13480.

Design:

P-Engineering designs District Cooling and Central Circulation System:

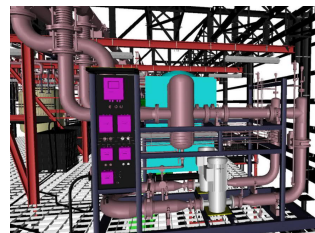
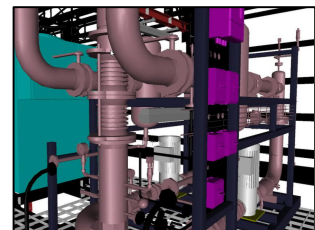
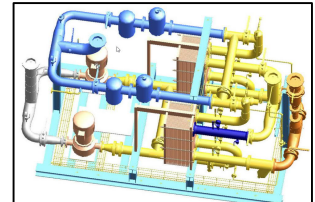
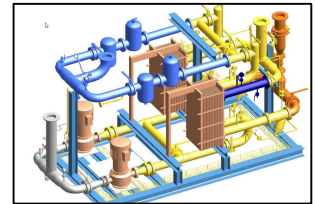
- PID
- Process Calculations
- Equipment Sizing (Pumps etc.)
- Pipe Design including of Pipe Isometric for fabrication
- Pipe Flexibility Checking (Sound Engineering should normally Cover)
- Support Structure
- Pipe Support
- Instrumentation
- Insulation Specification
- Make-up Water System
- MCC and Cabling Project
- BMS – Functional Description and SCADA Specification
- Equi-Potential Bonding

P-Engineering uses e.g.

- [AVEVA PDMS](#) Software for 3D design
- [CONVAL®](#) for Control Valve Design
- [PIPE-FLO®](#) Pump Sizing and Pressure Loss
- [ROHR2](#) software for Pipe Flexibility Calculations

Contact Information:

Christian Pallesen; +45 2526 8805; [cp@p-engineering.dk](mailto:cp@p-engineering.dk)



*Pictures of 3D designs of Unit for Production and Circulation as well as unit for Circulation alone.*