

## District Cooling: Installation

### P-131

Design of Piping Installation for District Cooling Installations according to the Regulations of the local Utility Supply Company.

#### PED – Pressure Directive:

According to the official interpretation of PED, this Directive applies after the first set of main seal off valves inside the building. Design from here will be according to PED and EN13480.

#### Design:

P-Engineering designs District Cooling System

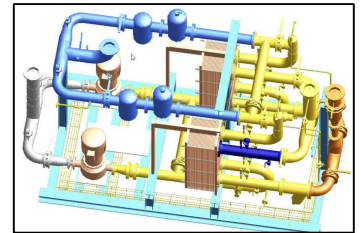
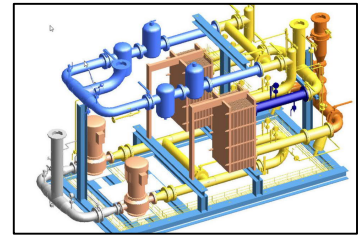
- PID
- Pipe Design including of Pipe Isometric for fabrication
- Equipment Specification (Heat Exchangers, Pumps, Filters)
- Support Structure
- Pipe Support
- Energy Measuring Layout
- Instrumentation (Instrument, Control Valves, SRV-valves)
- Insulation Specification
- Make-up Water System
- MCC and Cabling Project
- BMS – Functional Description and SCADA Specification
- Equi-Potential Bonding

P-Engineering uses e.g.

- [AVEVA PDMS](#) Software for 3D design
- [PipeFlo®](#) for Pipe Sizing and Pump Selection

#### Contact Information:

Christian Pallesen; +45 2526 8805; [cp@p-engineering.dk](mailto:cp@p-engineering.dk)



*Pictures of Heat Exchanger Unit and from exceptionally large Cooling Installation with 2MW Heat Exchangers*