

Central Heating: Floor Heating P-128

P-Engineering designs Floor Heating installation for

- General Heating
- Combined Heating in Atrium with Temperature Sensor in Concrete

Including design of Mixing Loops for temperature Control. The Mixing Loops is designed so Temperature keeps the Control Valves at average 70% opening, and Pump Control keeps the 3-Way Valve at 70% opening. With this setup the Mixing Loops system is Auto-tuning for lowest Pump work and optimum temperature.

Design:

P-Engineering designs with the following Scope:

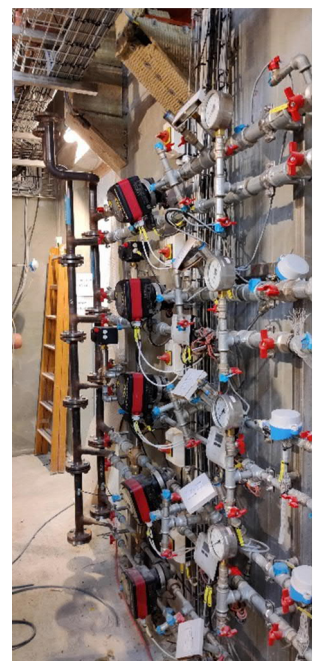
- PFD
- PID
- Process Calculations
- Pipe Design
- Pipe Support
- Instrumentation
- Insulation Specification
- BMS/SCADA Specification and Functional Descriptions.
- SAT-Test Procedures and Test Paradigms

P-Engineering uses e.g.

- [AVEVA PDMS](#) Software for 3D design
- [CONVAL®](#) for Control Valve Design
- [PIPE-FLO®](#) Pump Sizing and Pressure Loss

Contact Information:

Christian Pallesen; +45 2526 8805; cp@p-engineering.dk



Pictures various Floor Heating Installations as well as Mixing Loops for 5 Floor areas.