

Central Heating: Mixing Loops P-125

P-Engineering designs Standardized Mixing Loops for Heating Supply to AHU Heat Exchangers. The Mixing Loops are equipped with Industry Standard Control Valve for precise operation within a large range of operation. Furthermore, the Mixing Loops have multiple Nozzles for Verification of Operation during Commissioning.

P-Engineering makes detail designs including:

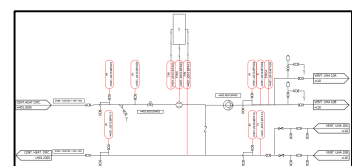
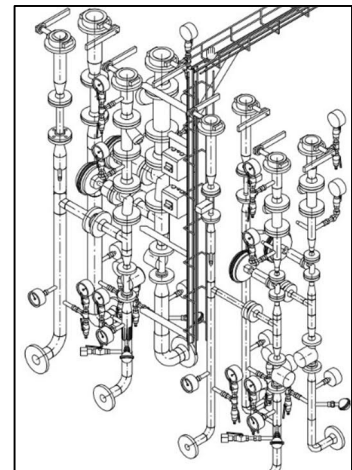
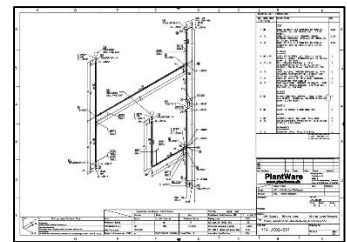
- PID
- Overall Sizing
- Pipe Design for Fabrication
- Control Valve Specification
- Equipment Specification - Pump, Filter and Valves
- Instrumentation – Temp., Pressure and Energy Metering
- Insulation Specification
- Surface Treatment Specification – Insulation
- MCC and Power Supply
- Cabling Project – Signals, Bus, Network and Power
- BMS – General Descriptions, Functional Description and SCADA Specification

P-Engineering uses e.g.

- [AVEVA PDMS](#) Software for 3D design
- [PipeFlo®](#) for Pipe Sizing and Pump Selection
- [CONVAL®](#) for Control Valve Sizing and Selection

Contact Information:

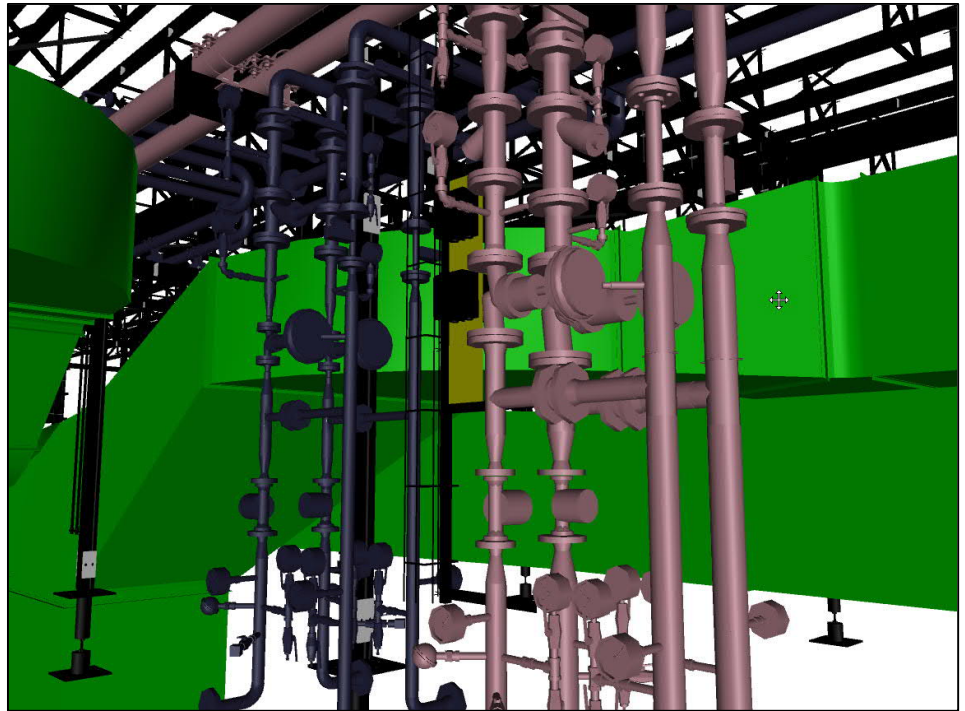
Christian Pallesen; +45 2526 8805; cp@p-engineering.dk



Construction of a group of Mixing Loops with Fabrication Drawings.

Central Cooling: Mixing Loops

P-125



3D Model of Mixing Loops for both Heating and cooling for Supplying AHU Heat Exchanger. Mixing Loops were hung in the Main distribution Piping to avoid Support on the Felt Roofing

