

District Heating Installations

P-121

Design of Piping Installation for District Heating Installations according to the Regulations of the local Utility Supply Company.

PED – Pressure Directive:

According to the official interpretation of PED, this Directive applies after the first set of main seal off valves inside the building. Design from here will be according to PED and EN13480.

Design:

P-Engineering designs District Heating System

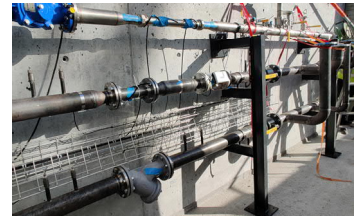
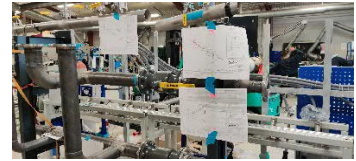
- PID
- Pipe Specification
- Insulation Specification
- Pipe Design including of Pipe Isometric for fabrication
- Pipe Flexibility Checking (Sound Engineering should normally Cover)
- Support Structure
- Pipe Supports
- Instrumentation
- Make-up Water System
- BMS – Functional Descriptions and SCADA input.
- Equi-Potential Bonding

P-Engineering uses e.g.

- [AVEVA PDMS](#) Software for 3D design
- [DXT](#) EN13480 Software for Detail Calculations
- [ROHR2](#) software for Pipe Flexibility Calculations

Contact Information:

Christian Pallesen; +45 2526 8805; cp@p-engineering.dk



Pictures from the pre-fabrication of a DN100 District Heating Mains Installation and an onsite fabricated DN40 District Heating Mains Installation.