

## Water Installation: Pressed P-111

P-Engineering performs detail design of Water Installation with the following Pipe Series

- C81: Broen
- C82: Mapress
- C83: Viega

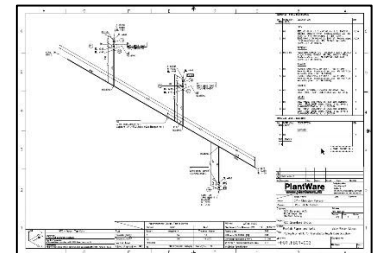
The Design output will be Piping Isometrics for as for pre-fabrication. However, the Isometric Drawings will be of Erection Type and can be used directly for construction work with a few supplementary site measurements. necessary.

P-Engineering makes full Design and Sizing of Piping throughout the building. The Piping system will be sectioned according to the Metering Strategy for the building – especially relevant for multipurpose buildings. Leakage and Breakage Measuring and Alarming via the SCADA system can be applied as well.

P-Engineering delivers QC plant for e.g., tracking tube materials and Press-connections quality with for example control of tube marking and ultimately X-Ray of insertion studs.

### Contact Information:

Christian Pallesen; +45 2526 8805; [cp@p-engineering.dk](mailto:cp@p-engineering.dk)



*Examples from Erection of Water Installation – Raw Cold Water, Hot Tap Water and Circulation Hot Tap Water. In the bottom prefabrication pipe Isometric of Water Piping is shown.*

## Water Installation: Pressed P-115

System Guarantee,  
Denmark

Especially for Denmark there is a request from Client side for a "System Guarantee" for Water Installations. This is based on the Main Manufacturer like

- [Broen](#)
- [Mapress](#)
- [Viega](#)

themselves has Specified the Operation Limits for their own Products. These companies therefore issue a Guarantee based on the contractor follows these companies training course, uses specific tools etc. The Guarantee normally also includes site inspections.



*Examples from prefabrication of Water Piping:*

*Above: Welded Manifold  
Below: Water Booster Unit from Grundfos (which has been supplied with welded piping before EN10312 was issued first time) with welded internal piping.*

P-Engineering uses e.g.

- [AVEVA PDMS](#) Software for 3D design
- [DXT](#) EN13480 Software for Detail Calculations
- [PIPE-FLO®](#) Software for Flow Calculation, Pump Sizing etc.

Contact Information:

Christian Pallesen; +45 2526 8805; [cp@p-engineering.dk](mailto:cp@p-engineering.dk)