

Water Installation Back-Flow P-112

Protecting the Drinking water is important. EN1717 outlines the degree of protection needed for different applications as well as the practical solutions.

P-Engineering offers design of Water Installation for both Industry and Commercial Buildings like Offices/Head Quarters in accordance with EN1717:

Commercial Buildings:

Protection Class 1, 2, 3 and 4 in relation to e.g.

- Outside Hoses
- Industrial Kitchen Equipment
- Water Treatment
- Fire Fighting Water

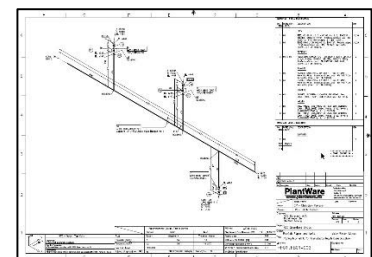
Industry:

Protection Class as above and Special Protection Class 5 if water is supplied to e.g., production or laboratories with either Bacteria or Virus with Air-Break for protection.

P-Engineering offers Detailed Engineering for Water Installations for prefabrication with Pipe Isometric Drawing as well as BoQ (Bill of Quantities) for manufacturing.

Contact Information:

Christian Pallesen; +45 2526 8805; cp@p-engineering.dk



Top pictures: Water Installation for an API factory (Active Pharmaceutical Ingredient) where Class 5 protection was applied with Air Gap between internal system and Public Supply. With Class 5 protection a set of Booster Pumps is needed.

Middle Picture: Valve for Class 4 protection.

Bottom Picture: show example from prefabrication of Water Piping.