

Pipe Design: Venturi Design

Design of Venturi Solutions for measuring of Gas Flow:

- N-Gas
- Steam (Saturated and Superheated)
- Air (Compressed)
- Other Gases

The Venturi Utilizes the Bernoulli Theory of Constant Total Pressure as a sum of Dynamic and Static Pressure. The Venturi is very accurate and not leave any permanent Pressure Loss.

Design Package

P-Engineering can deliver a design package for fabrication with Detail Drawing, Instrument Specification etc.

Equipment Package

P-Engineering can further deliver the installation as an Equipment Package with Endress & Hauser Instrumentation and LCP with Signals (4-20mA) for

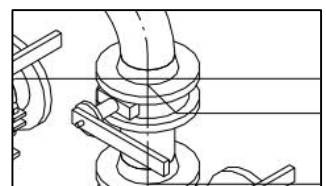
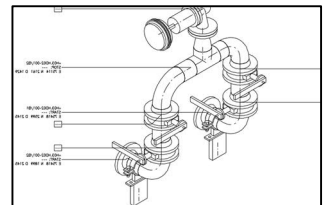
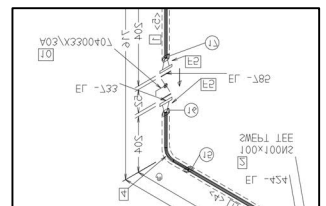
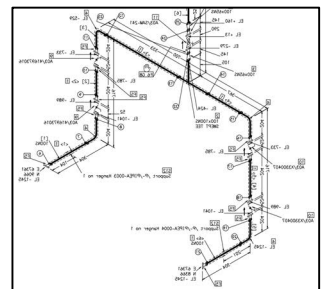
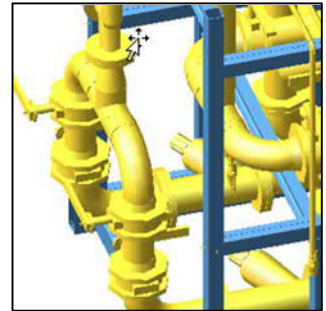
- Temperature
- Flow
- Static Pressure

P-Engineering uses e.g.

- Solidworks Design Software for 3D design
- [DXT](#) EN13480 Software for Detail Calculations

Contact Information:

Christian Pallesen; +45 2526 8805; cp@p-engineering.dk



Pictures of same Pipe as Pipe Isometric and Isometric Pipe Drawing.