

Pipe Design acc. to EN12953 P-102

Design of Piping Installation according to EN 12953 – Boiler Standard – such as

- Internal Connection Piping
- Downcomers
- Feed Water Lines
- SRV Blow Off Lines
- Manifolds

Furthermore, we use this norm for special Industry Applications where EN 13480 does not cover.

The design work covers full Engineering Scope from creating Piping Specifications with detail calculations of e.g., Olets, Tees, and Elbow for a specific set of Pressure and Temperature to creating:

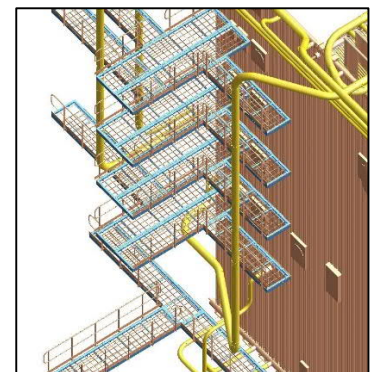
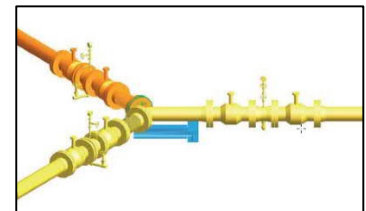
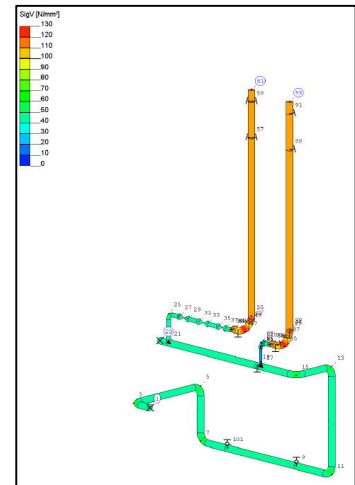
- Overall 3D Piping Arr.
- Platform and Access Ways
- Fabrication Pipe Isometrics
- Pipe Support with Spring og Constant Load Hangers
- Support Steel
- Pipe Flexibility Calculation applied if required.

P-Engineering uses e.g.

- [AVEVA PDMS](#) Software for 3D design
- [DXT](#) EN13480 Software for Detail Calculations
- [LISEGA](#) Support Design Tool
- [ROHR2](#) software for Pipe Flexibility Calculations

Contact Information:

Christian Pallesen; +45 2526 8805; cp@p-engineering.dk



Picture Top - ROHR2 investigation - Picture Middle - Special application for Piping PN100 for Military Fuel Line and Picture Bottom - Biomass Boiler for [Fynsværket](#) Unit 7